

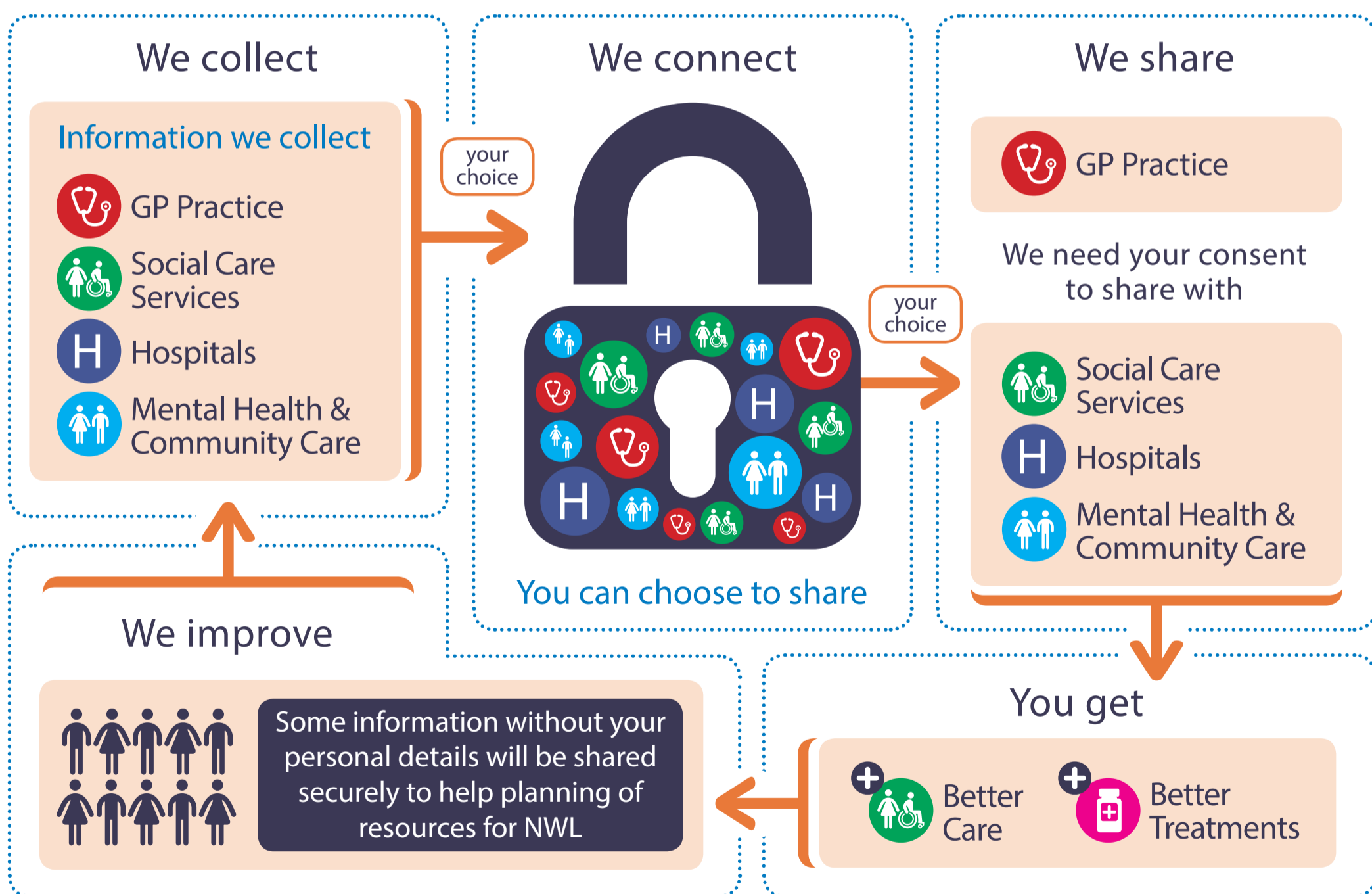


THE ROYAL BOROUGH OF  
KENSINGTON  
AND CHELSEA

# How we use your information to improve care

Whether you are visiting a GP, attending hospital, being seen in your community or at home, care professionals providing your care will be able to see essential information about you.

You have the choice not to share your information at any time.



Visit our website: [integration.healthiernorthwestlondon.nhs.uk](http://integration.healthiernorthwestlondon.nhs.uk)  
or email: [share4care@nhs.net](mailto:share4care@nhs.net)

Talk to your health or care professional providing care to you.